



# Lake Forest

Office Plaza

*Premium  
For Sale  
Office Condos*  
**(469) 425-4182**



- ▶ 1,177 SF - 4,774 SF
- ▶ Turn-key, fully built-out office
- ▶ Only 8 units available
- ▶ Long term value for Buyers
- ▶ Distinctive architecture & landscaping
- ▶ SBA Financing available with 10% down!
- ▶ All units feature private entrances & corner offices
- ▶ Immediate access to 121
- ▶ 10 minutes to Historic Downtown McKinney
- ▶ 30 minutes to DFW & Love Field Airports

Brought to you by

**GILLETT COMMERCIAL**

Real Estate Brokerage & Development

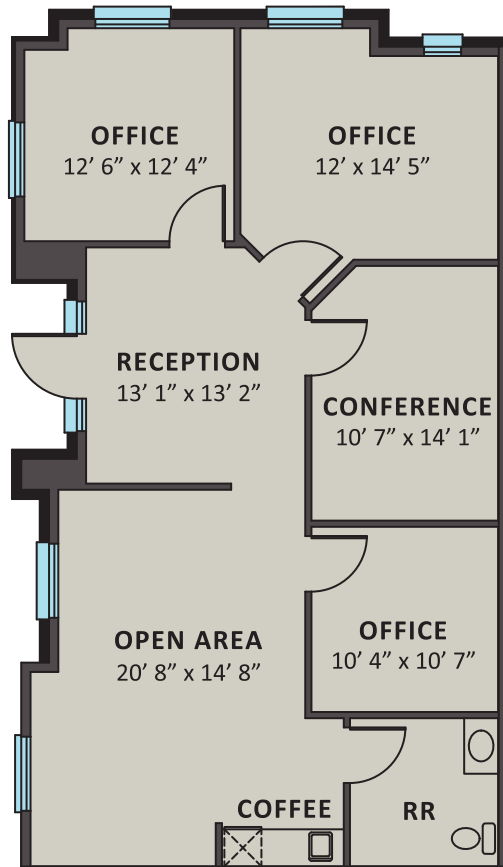
**5050 & 5060  
Collin McKinney Pkwy  
McKinney, TX 75070**

**Construction  
Complete!**

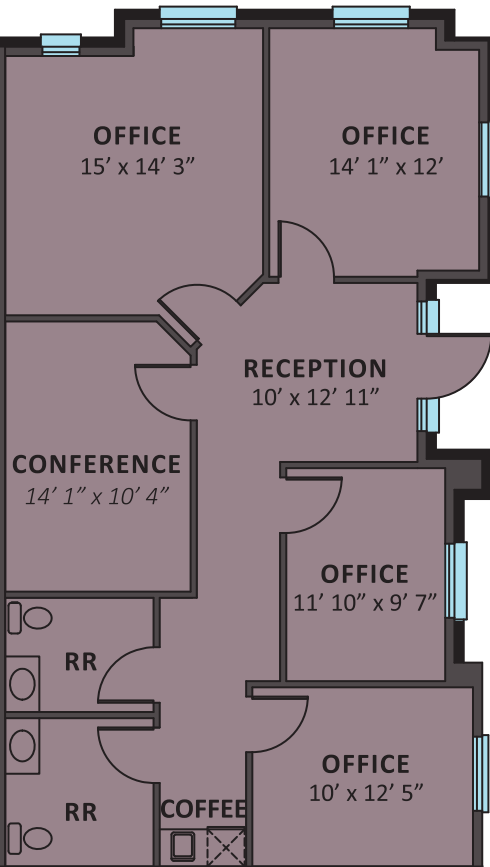
**[www.lakeforestofficeplaza.com](http://www.lakeforestofficeplaza.com)**

**Floorplans**

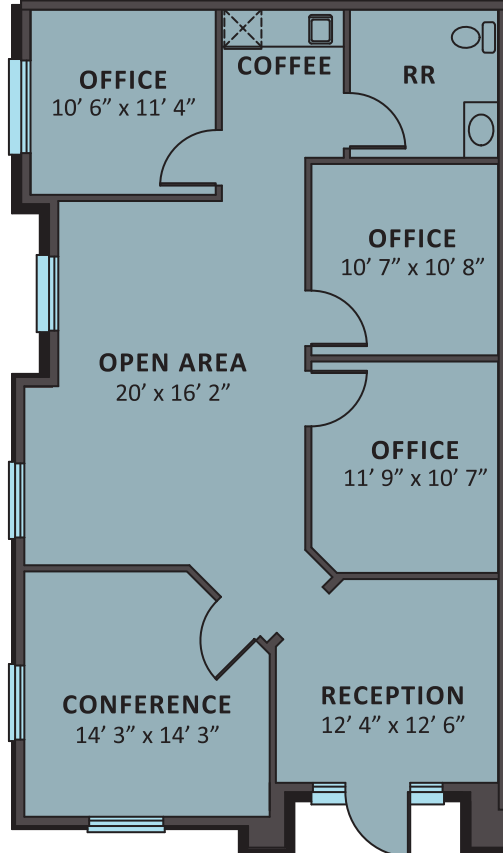
**SUITE 204**  
**1,205 SF**



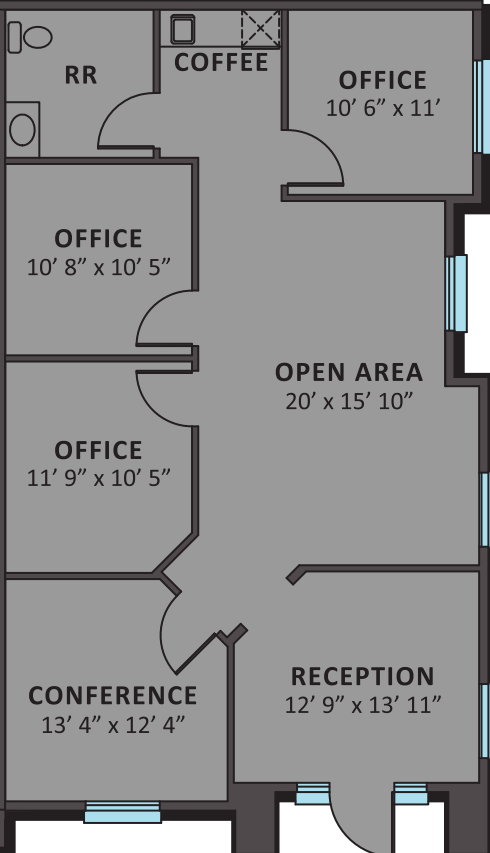
**SUITE 203**  
**1,205 SF**



**SUITE 201**  
**1,187 SF**



**SUITE 202**  
**1,177 SF**



\* The floorplan shown is for 5050. The layout for 5060 is reversed.

# For Sale Office Condos

5050 & 5060 Collin McKinney Parkway, McKinney, TX 75070

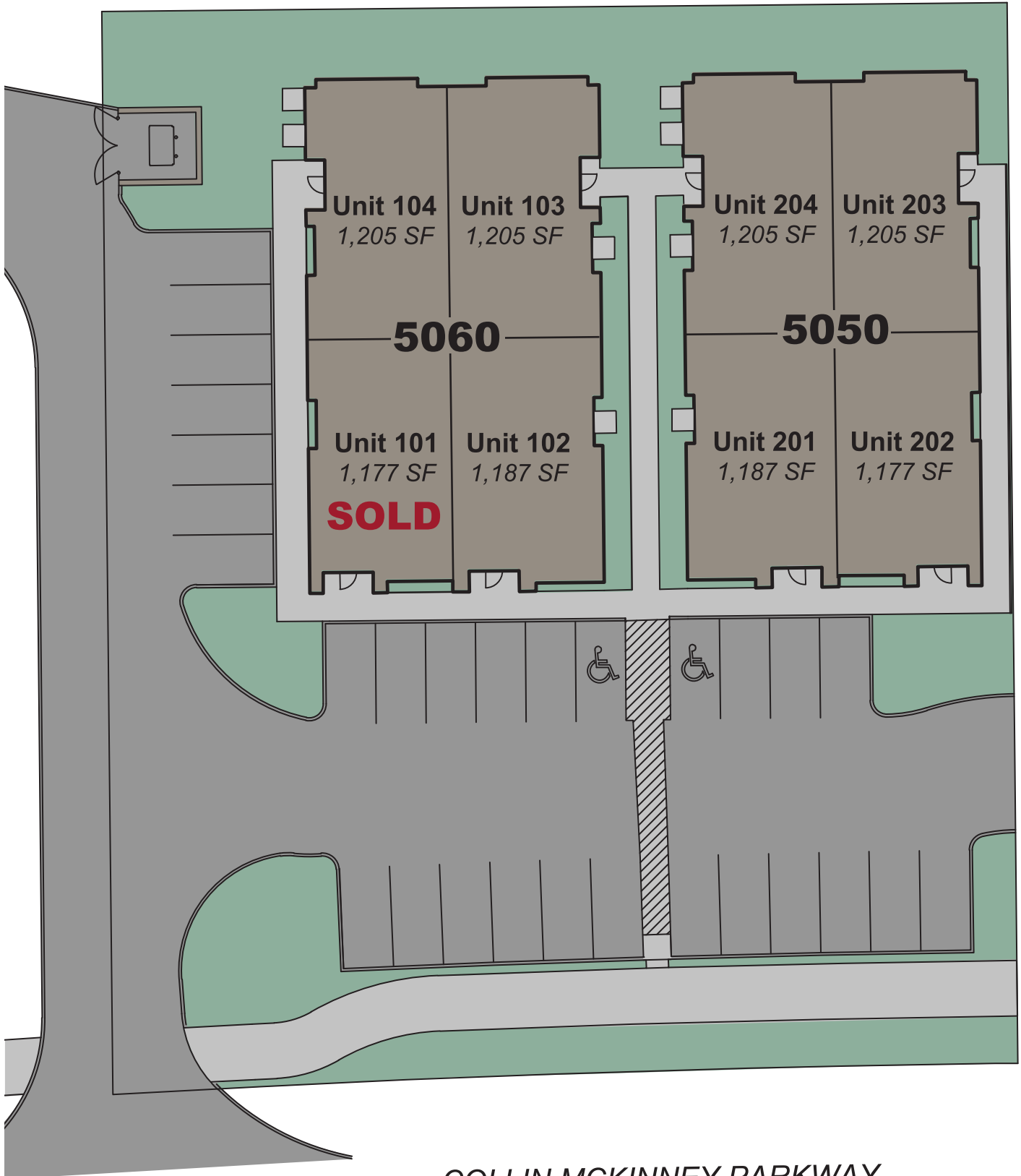
**(469) 425-4182**

[www.lakeforestofficeplaza.com](http://www.lakeforestofficeplaza.com)



**Lake Forest**  
Office Plaza

## Site Plan



COLLIN MCKINNEY PARKWAY



# For Sale Office Condos

5050 & 5060 Collin McKinney Parkway, McKinney, TX 75070

**(469) 425-4182**

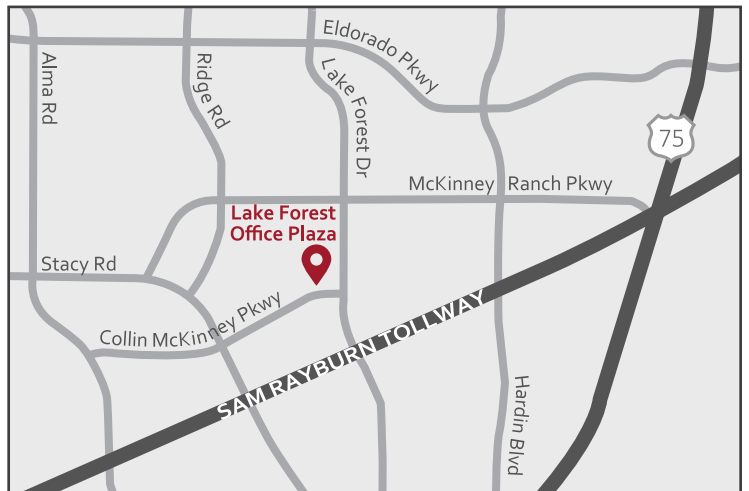
[www.lakeforestofficeplaza.com](http://www.lakeforestofficeplaza.com)



## Location

Lake Forest Office Plaza is located at the Northwest corner of Lake Forest Drive and Collin McKinney Pkwy

Come and visit our OnSite Office located at:  
**5050 Collin McKinney Pkwy, Suite 201**



For more information, contact:



**GILLETT COMMERCIAL**

Real Estate Brokerage & Development

**(469) 425-4182**

**Bucky Gillett**

(949) 422-7227

[bucky@gillettcommercial.com](mailto:bucky@gillettcommercial.com)

**Kirstin Emershaw**

(949) 274-2015

[kirstin@gillettcommercial.com](mailto:kirstin@gillettcommercial.com)